

September 21, 2007

Dear Smith Creek Landowner,

We would like to invite you to a meeting on Monday, October 1<sup>st</sup> at 10:00 a.m. at the Mohawk Community Resource Center located at 8989 Highway 89, Suite 4 in Blairsden-Graeagle to discuss the planned construction of a stream restoration project on Smith Creek within Smith Ranch above the Goldridge Estates area. The environmental analysis for this project was completed through the California Environmental Quality Act (CEQA) process and approved by the Plumas County Planning and Building Services in January 2007. The thirty-day public comment period was advertised in local papers on January 24<sup>th</sup> and closed on February 22, 2007. No comments were received. The final Notice of Determination was filed with the Plumas County Clerk on March 9, 2007. This meeting is intended to address recent concerns raised by some property owners near the project area. Project construction is planned to begin on October 8, 2007.

Attached are maps of the project and an agenda for discussion outlining the issues that will be covered at the meeting regarding this project. We value your input and hope you are able to attend. If you have any questions regarding the meeting and/or the Smith Creek Restoration Project, please feel free to contact us at (530)283-3739.

Sincerely,

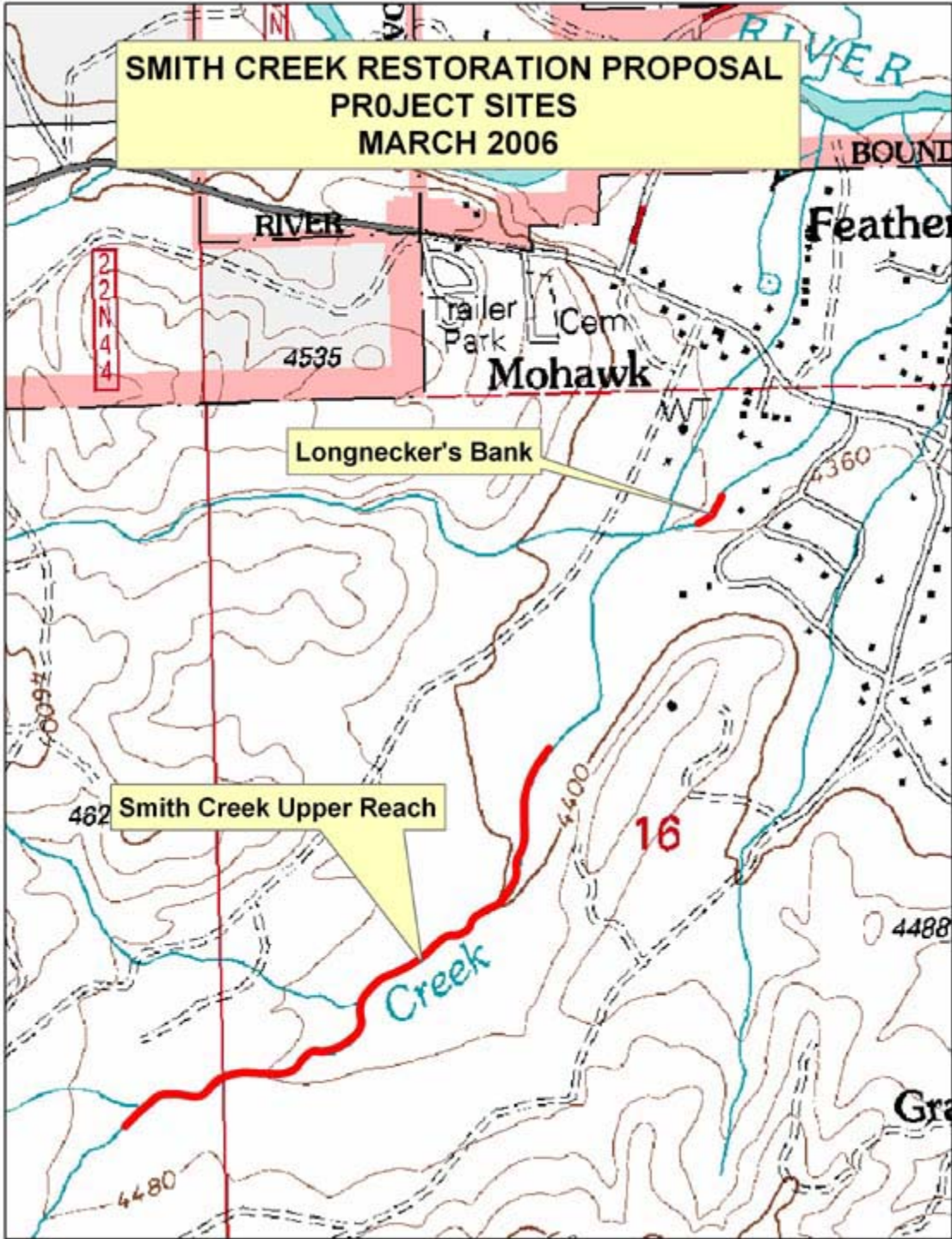
Gia Martynn,  
Feather River CRM  
Watershed Coordinator

**Agenda**  
**Smith Creek Landowner Meeting**  
**October 1, 2007**

Mohawk Community Resource Center  
8989 Highway 89, Suite 4  
Blairsdon-Graeagle

- 9:45            Sign-In
- 10:00           Welcome, Introductions, Agenda Overview and Meeting Protocol  
                 - Gia Martynn, FRCRM Watershed Coordinator
- 10:15           Plumas Corporation, Feather River Coordinated Resource Mgt. Group  
                 Who we are and what we do; TAC Introductions  
                 – Leslie Mink, FRCRM Project Manager
- 10:30           Smith Creek Project History, Development, Objectives, Design  
                 Alternatives, Final Proposal, Funding and Schedule  
                 - Terry Benoit, FRCRM Project Manager
- 11:30           Ground Water Concerns  
                 - Burkhard Bohm, Plumas Geohydrology  
                 - Plumas County Environmental Health
- 12:00           Project Monitoring  
                 monitoring plan/schedule and data collection; projected outcomes based  
                 on past project monitoring results  
                 - Jessica Albietz, FRCRM Monitoring Coordinator  
                 - Leslie Mink, FRCRM Project Manager
- 12:30           Potential Risks and Post-project Management  
                 - Terry Benoit, FRCRM Project Manager
- 1:00            Questions/Answers  
                 - FRCRM Staff and TAC
- 1:45            Wrap-Up/Conclusions

**SMITH CREEK RESTORATION PROPOSAL  
PROJECT SITES  
MARCH 2006**



**SMITH CREEK AREA OF POTENTIAL EFFECTS (APE)  
AND PROPOSED ACCESS ROUTES (APE = 26.77 acres)**

Scale: 1" = 556'



4624

Proposed  
Access Route

16

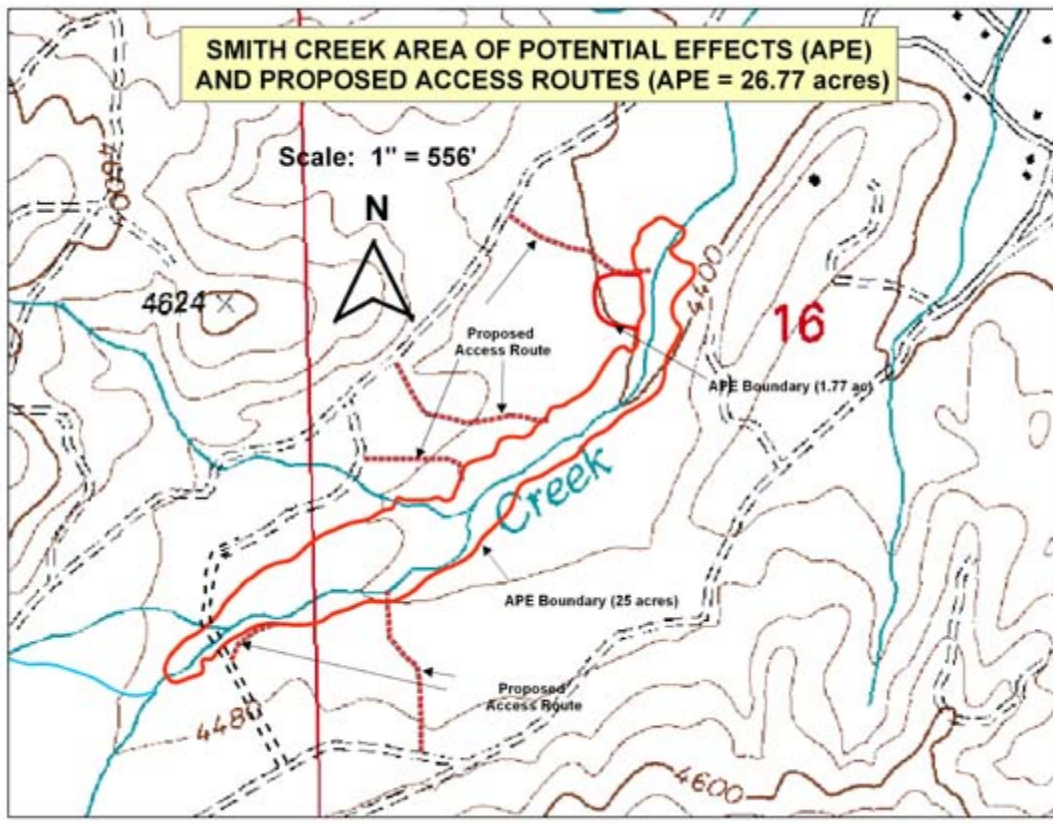
APE Boundary (1.77 ac)

APE Boundary (25 acres)

Proposed  
Access Route

4480

4600



SMITH CREEK MEADOW RESTORATION PROPOSAL  
UPSTREAM REACH  
March 2006

